

Corners to be Indexed

NE 34-106-41
E1/4 34-106-41

STATE OF MINNESOTA, }
COUNTY OF MURRAY, } ss.

I hereby certify that the within Instrument was filed in this office for record on the 13TH day of DECEMBER A.D. 20 19 at 9:00 o'clock A. M, and was duly recorded as Document No. _____

I hereby certify that this document and the data contained herein was prepared by me or under my direct supervision.

Daniel L. Bueltel

Aug. 6, 2019
Date

Daniel L. Bueltel
License No. 43844

Evelyn C. Larson
County Recorder

CERTIFICATE OF LOCATION OF GOVERNMENT CORNER

Land survey monuments situated in Section 34, Township 106, Range 41, 5TH P.M.

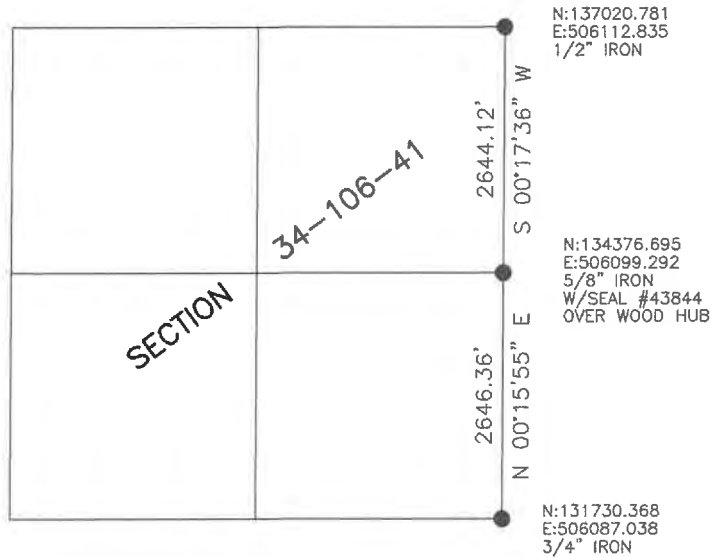
STATE OF MINNESOTA, County of MURRAY

STATEMENT OF EVIDENCE:

- 1861 - Original Government Survey.
- 1898 - J.W. Woolstiencroft set stones at the NE and N1/4 of 34-106-41.
- No Date - Murray Co. Hwy Dept. found stone at NE 34-106-41 and set 1/2" iron and railroad spike over it.



- FOUND MONUMENT
- SET MONUMENT



Minnesota State Plane Coordinate
System Murray County Datum NAD83 (1996)

Statement of Evidence

NE 34-106-41

In 1861, L.G.M. Fletcher did the original subdivision of the township.

On April 12, 1898, J.W. Woolstiencroft set stone in grade at the corner.

No Date, the Murray County Highway Department located the field stone and set a steel pin and railroad spike over it.

On July 10, 2017, Bueltel-Moseng Land Surveying found a 1/2" iron at the corner.

E1/4 34-106-41

In 1861, L.G.H. Fletcher did the original subdivision of the township.

On April 12, 1898, J.W. Woolstiencroft set a stone in the road at the corner.

On July 20, 2017, Bueltel-Moseng Land Surveying dug with a backhoe. We found a 1"x2"x12" wood hub 5'± below the surface. We removed it and continued to dig. We did not find anything else. We held to the position of the hub and set a 5/8" iron with seal #43844 over it.